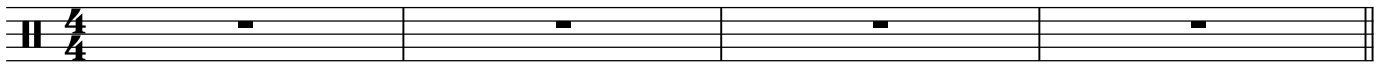


Shawn Mendes - Stitches

♩ = 146

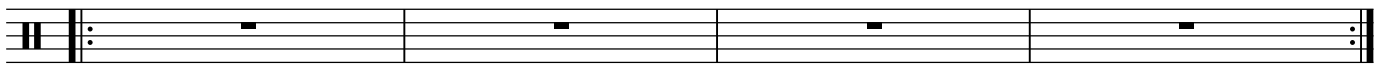
Bart den Ouden

Intro

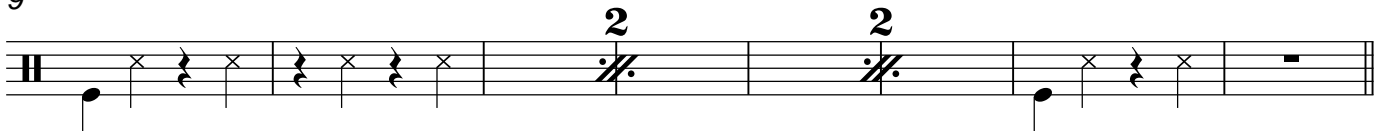


5 Verse 1

Play 4 times



9 Pre-chorus



17 Chorus

Play 4 times
(4)

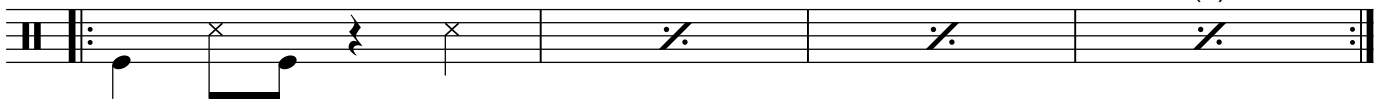


21 Verse 2



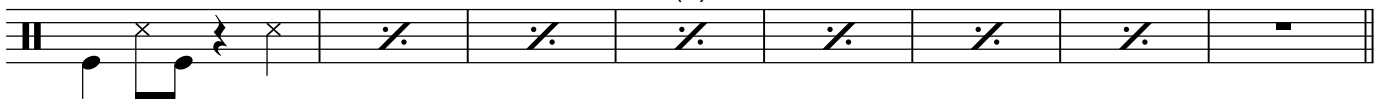
25

Play 3 times
(4)



29 Pre-chorus

(4)

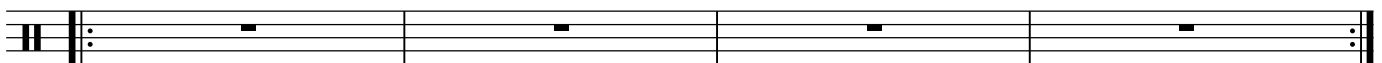


37 Chorus

Play 4 times
(4)



41 Bridge



45

(4)



49

(4)

A musical staff in treble clef with a key signature of one sharp (F#). The staff contains a sequence of notes: a quarter note G4, a quarter note A4, a quarter note B4, a quarter rest, a quarter note C5, a quarter note B4, a quarter note A4, and a quarter note G4. The first two notes are beamed together. The first two notes have an 'x' above them. The staff ends with a double bar line.

Chorus

57

Play 4 times
(4)

A musical staff in treble clef with a key signature of one sharp (F#). The staff contains a sequence of notes: a quarter note G4, a quarter note A4, a quarter note B4, a quarter note C5, a quarter note B4, a quarter note A4, and a quarter note G4. The first two notes are beamed together. The first two notes have an 'x' above them. The staff ends with a double bar line.

Outro

61

(4)

A musical staff in treble clef with a key signature of one sharp (F#). The staff contains a sequence of notes: a quarter note G4, a quarter note A4, a quarter note B4, a quarter note C5, a quarter note B4, a quarter note A4, and a quarter note G4. The first two notes are beamed together. The first two notes have an 'x' above them. The staff ends with a double bar line.